

ITEM 44. CAR SHARE – KIRBY WALK ZETLAND

TRIM RECORD NO: 2016/289253

RECOMMENDATION

It is recommended that the Committee endorse the reallocation of parking on the northern side of Kirby Walk, Zetland between the points 13 metres and 18 metres (one car space) east of Victoria Park Parade as 'No Parking Car Share Vehicles Excepted' subject to the following:-

- (A) The City will only install signage for the car share space when GoGet has a car to occupy the space.

VOTING MEMBERS FOR THIS ITEM

<i>Voting Members</i>	<i>Support</i>	<i>Object</i>
City of Sydney		
Roads and Maritime Services		
NSW Police –Redfern LAC		
Representative for the Member for Heffron		

DECISION

BACKGROUND

The City is committed to providing dedicated parking for car sharing across the Local Government Area as part of a Council approved Car Share Policy. A submission has been received from GoGet for a car share space in Kirby Walk, Zetland, east of Victoria Park Parade.

COMMENTS

The kerb space on the northern of Kirby Walk, Zetland between Victoria Park Parade and George Julius Avenue is currently signposted as “4P 8am-6pm Mon-Fri”.

The car share space will be installed and managed in accordance with the Roads and Maritime Service’s Technical Direction 2007/04 and the provisions of the Council-approved Car Share Policy.

Car sharing is popular in more than 600 cities worldwide, and research has shown substantial environmental benefits. Car sharing reduces total urban driving, reduces household vehicle holdings, and increases walking, cycling and public transport use.

Current membership is approximately 29,084, of which 8,356 are business members.

As of May 2016, there were 204 GoGet car share members within a 250 metre radius of this location with seven members in Kirby Walk, 20 members in Ascot Avenue, and 13 members in George Julius Avenue.

Within a 250 metre radius of this location, there are currently five spaces allocated for GoGet car share vehicles.

CONSULTATION

The City consulted local residents and businesses in the area. There were 761 letters sent out with one response supporting the proposal and one response opposing the proposal due to the loss of parking and that the number of spaces already dedicated to car sharing in the local area is sufficient.

The adjacent properties are apartment buildings with off-street parking. The residents supporting the proposal are car share members and support the scheme being extended to provide an alternative to private car ownership and reducing the number of cars around the City.

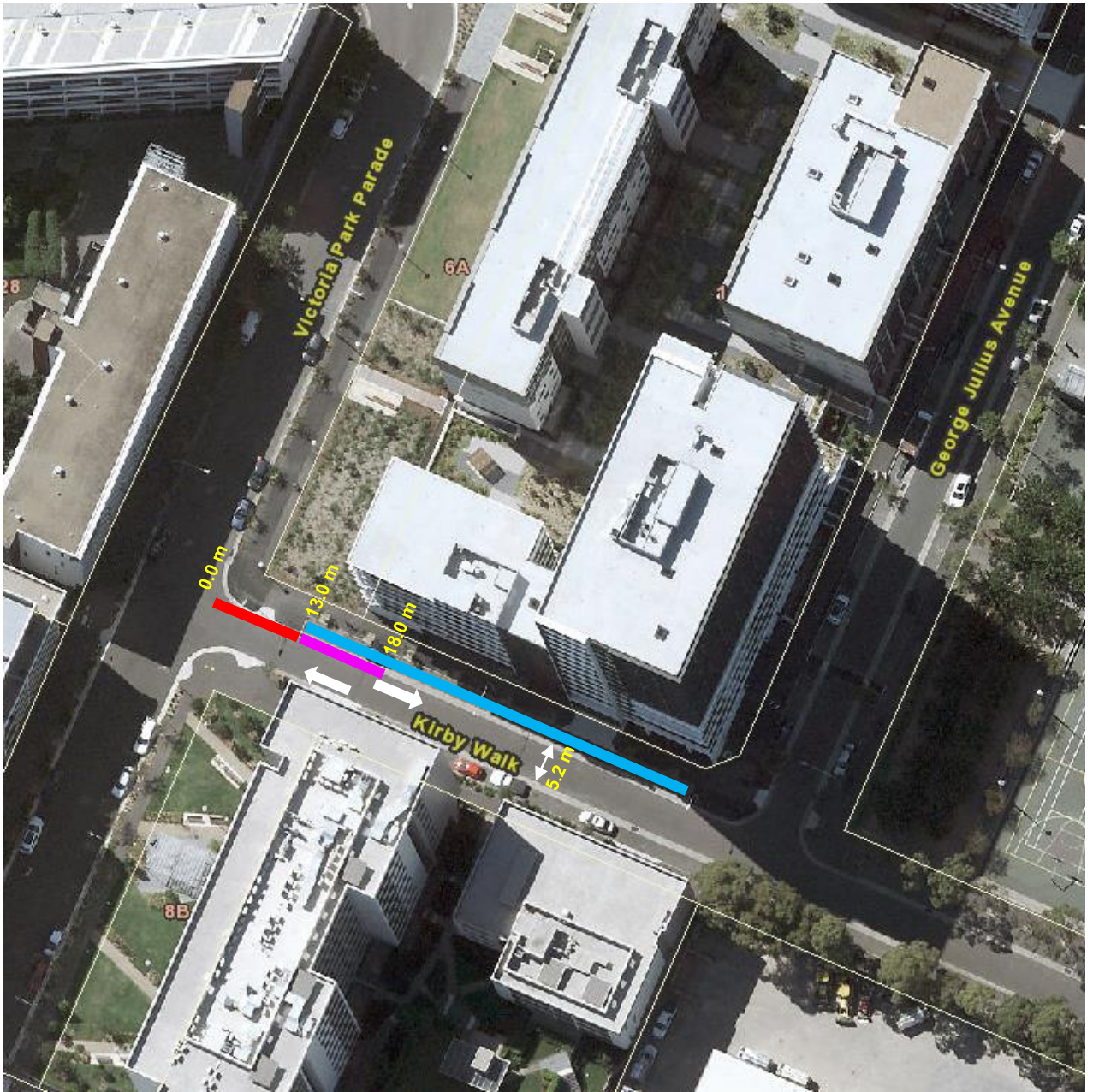
FINANCIAL

Funds are available in the current budget.

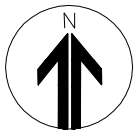
ATTACHMENTS

Car Share – Kirby Walk Zetland

Claudia Calabro, Business Support Officer



	<u>Existing</u> No Stopping		<u>Proposed</u> New Car Share
	<u>Existing</u> 4P 8am-6pm Mon-Fri		



PROPOSAL

KIRBY WALK ZETLAND
PROPOSED CAR SHARE



